



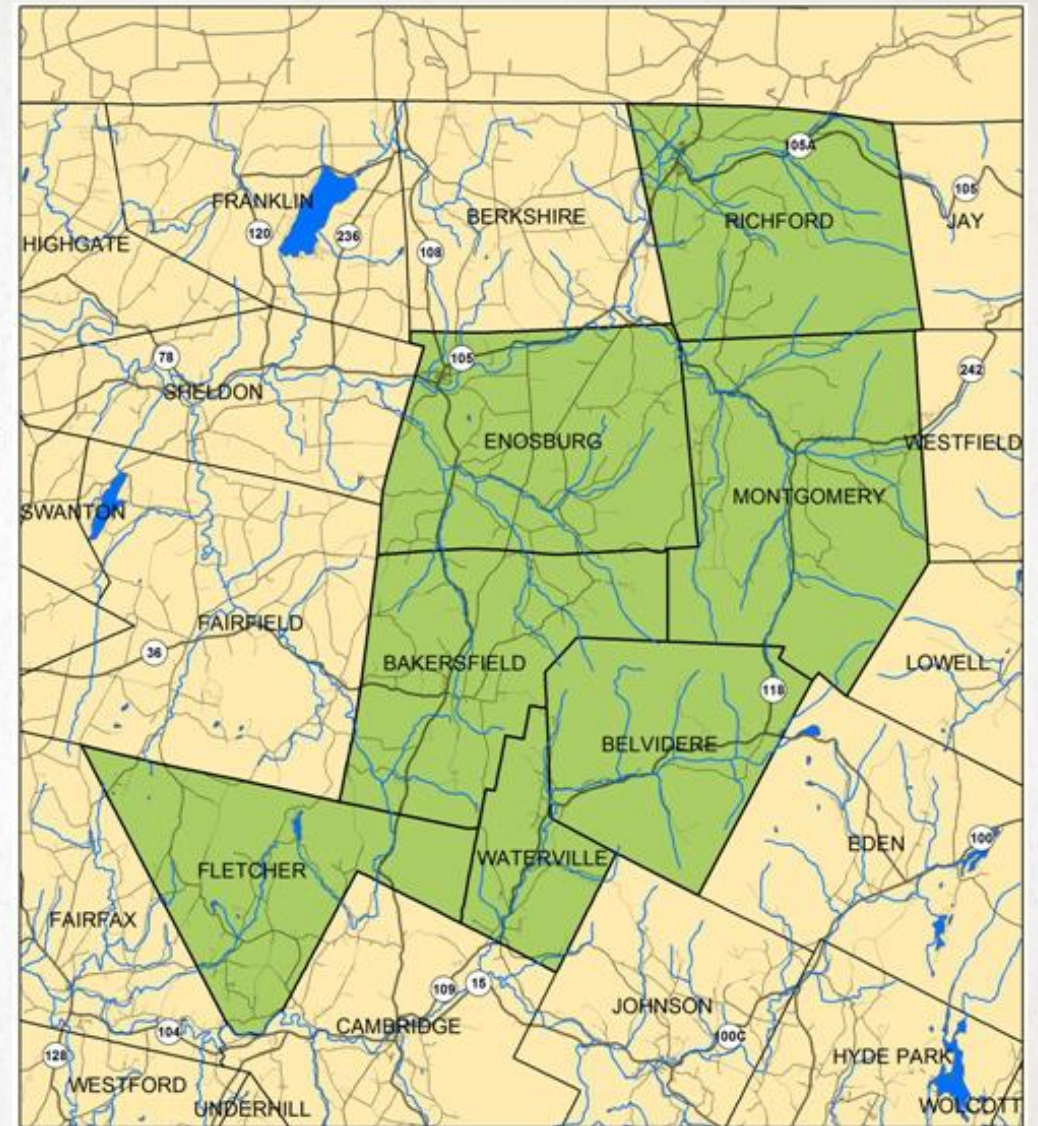
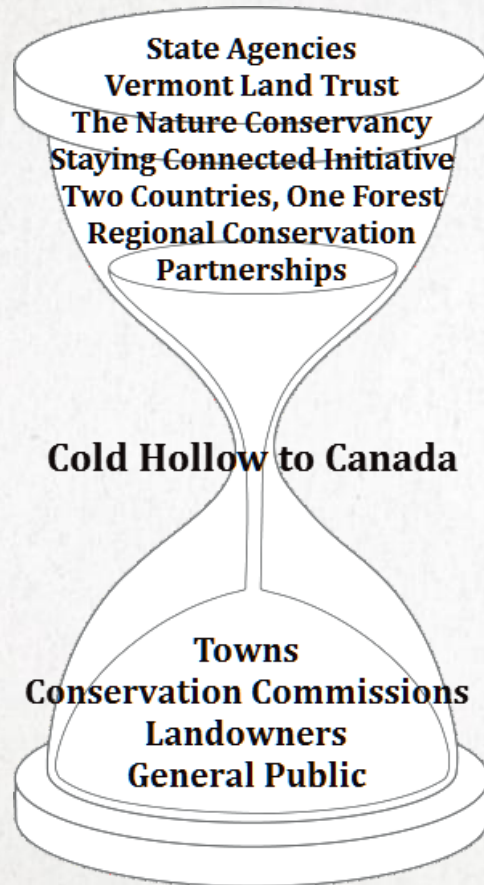
COLD HOLLOW
TO CANADA

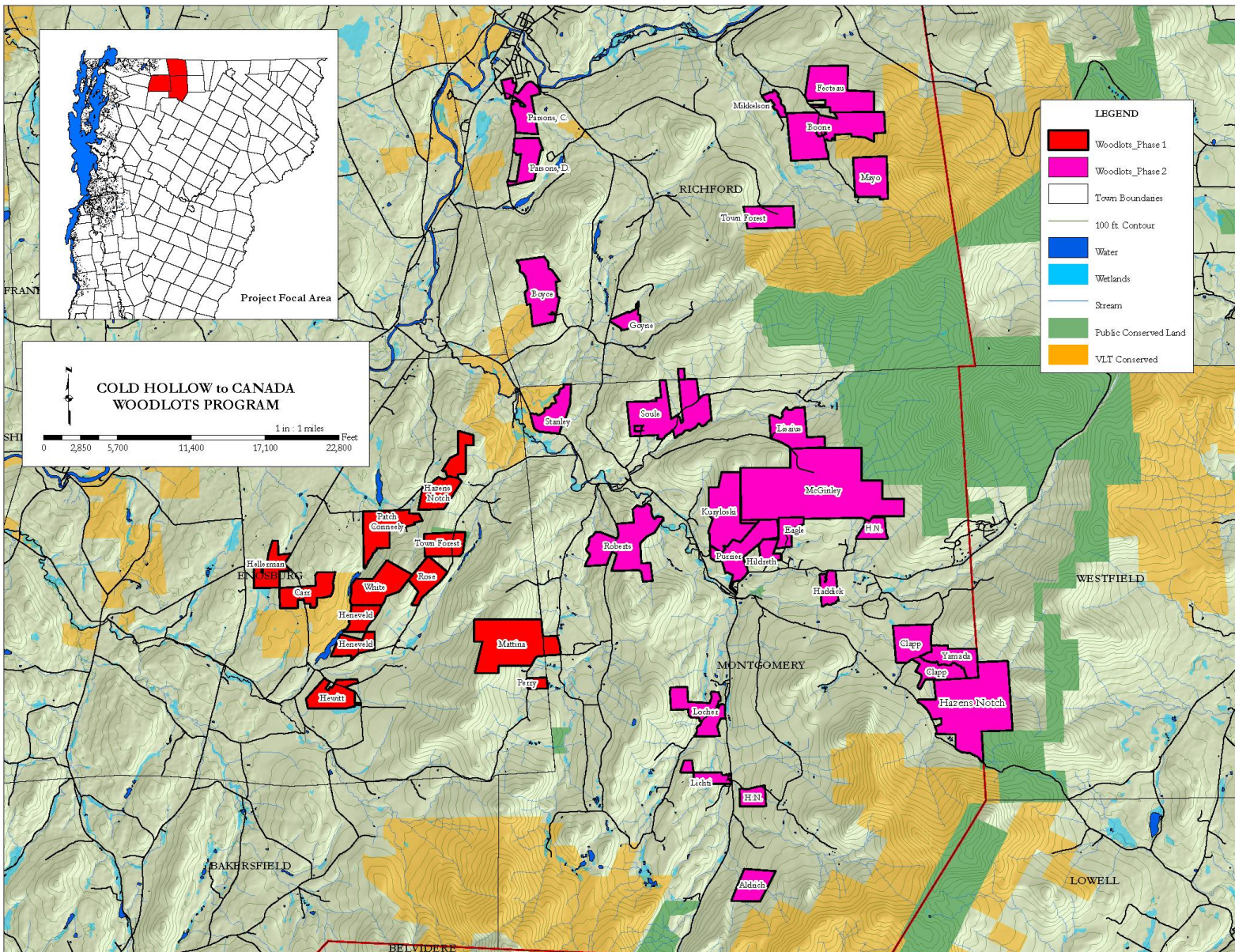
The Cold Hollow Woodlots Program

ENGAGING LANDOWNERS IN LANDSCAPE LEVEL STEWARDSHIP



COLD HOLLOW TO CANADA





WHAT IS A WOODLOTS GROUP?

- High priority habitat blocks
- Contiguous Properties
- 50 acres or more

HOOKING LANDOWNERS



One
Love



Pride

Eye-
Candy



Fear



Honor





ONE LOVE: WORKING TOGETHER

- Quarterly Gathering
- Potluck Meal Together
- Bring In Experts
- Walking A Neighbor's Property

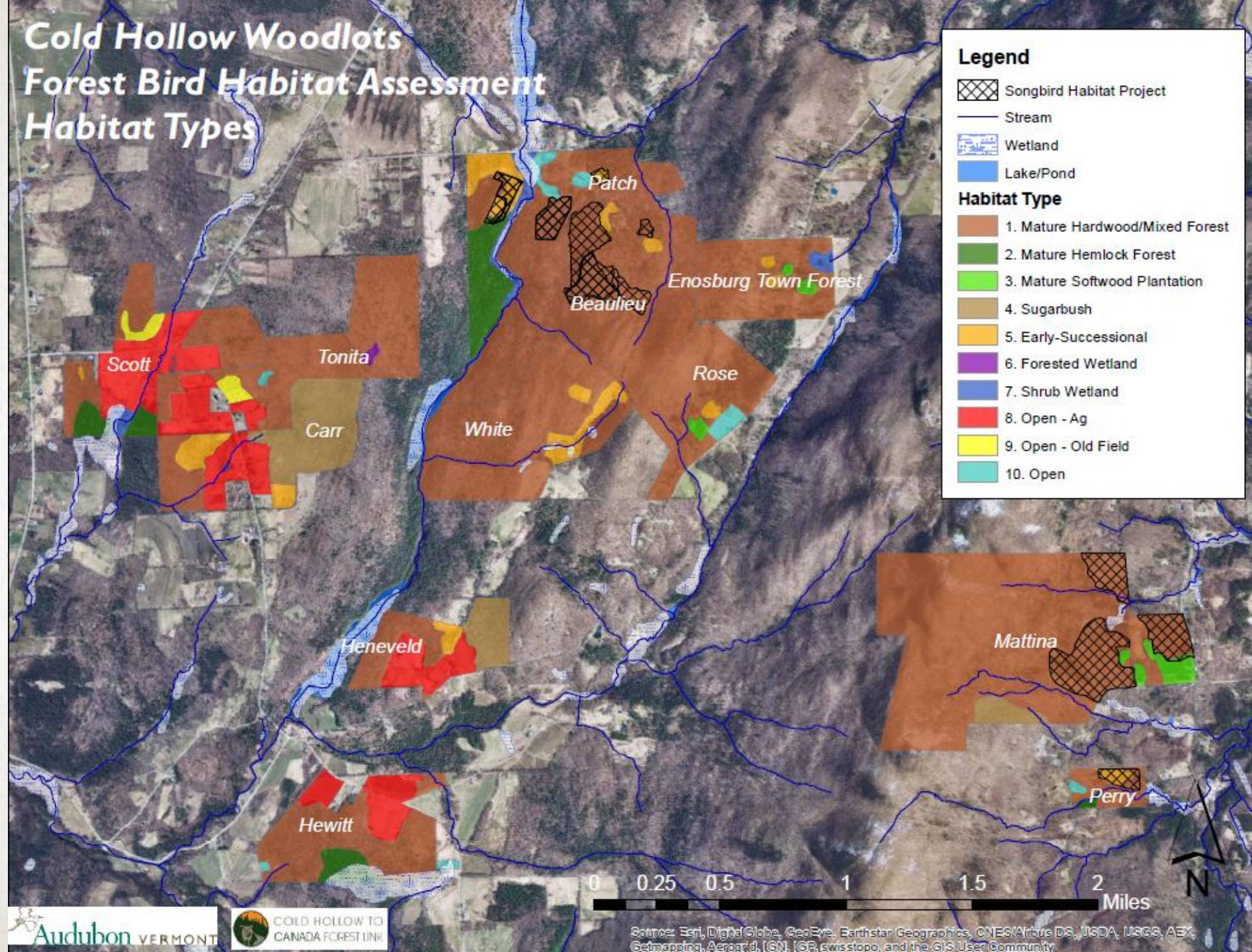




PARTNER PROGRAM STRENGTHS

- Roughly half of Vermont's birds will see their ranges shift or contract by 50% or more
- Silviculture with Birds in Mind by Audubon Vermont
- Member parcels undergo a bird habitat assessment by Audubon Vermont

Cold Hollow Woodlots Forest Bird Habitat Assessment Habitat Types





CLIMATE CHANGE ADAPTATION & RESILIENCY

Take a big, scary thing & break it
down into collective action.

Creating and Maintaining Resilient Forests in Vermont:

Adapting Forests to Climate Change



Vermont Department of Forests,
Parks and Recreation

May 2015



CLIMATE CHANGE ADAPTATION & RESILIENCY

Take a big, scary thing & break it
down into collective action.

Increasing Forest Resiliency for an Uncertain Future



Paul Catanzaro | Anthony D'Amato | Emily Silver Huff



CLIMATE CHANGE ADAPTATION & RESILIENCY

Take a big, scary thing & break it
down into collective action.



Strategy 9: Facilitate community adjustments through species transitions

9.1—Anticipate and respond to species decline

9.2—Favor or restore native species that are expected to be better adapted to future conditions

- Rich soils on portions of these properties provide a buffering capacity against climate change. Sugar maple and yellow birch are both predicted to be stressed by climate change but the optimum conditions found on parts of this property provide an advantage to maintaining these species on this site for the long term: **7 of 12 plans** (B, C, Hen, Hew, M, PC, R)

9.3—Manage for species and genotypes with wide moisture and temperature tolerances

9.4—Emphasize drought and heat tolerant species and populations

- Natural red oak regeneration has been released by removing the overstory: **1 of 12 plans** (PC)
- Red oak seedlings have been planted: **1 of 12 plans** (PC)
- Red oak acorns have been planted, amended plan: **1 of 12 plans** (W)

9.5—Guide species composition at early stages of development

- Pre-commercial treatments that guide species are implemented in portions of these properties: **9 of 12 plans** (B, C, Hen, M, PC, P, S, R, W)



Climate Change Adaptation & Resiliency

Take a big, scary thing & break it
down into collective action.

**USFS Pilot: Climate Change Adaptation
Strategies & Approaches**

www.forestadaptation.org/node/360

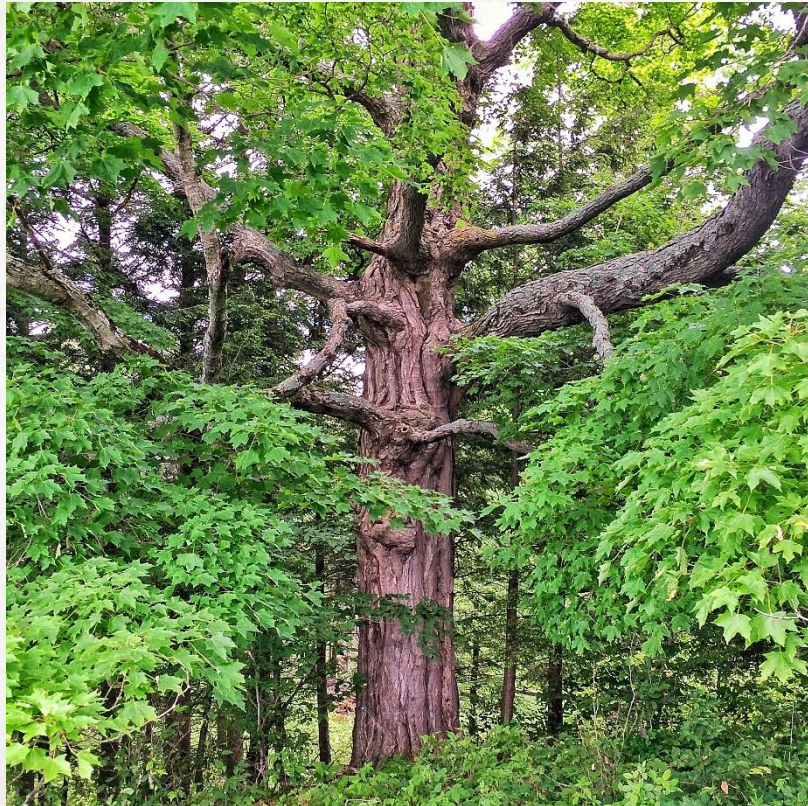


MONITORING & FOLLOW UP

- By design, Woodlots Groups are demonstration sites
- Through plan implementation; forest inventories & invasive monitoring
- Exploring opportunities to engage landowners as citizen scientist/monitors



THE COLD HOLLOW WOODLOTS MODEL



We believe the CHC Woodlots Program is a solutions based model for engaging an increasing number of individual and family forest owners in forest management practices.

8,000 Acres

1,800 Acres
Conserved

Leveraging
Resources

\$640K RCPP

\$105K
Conservation
Fund

\$50K LSR